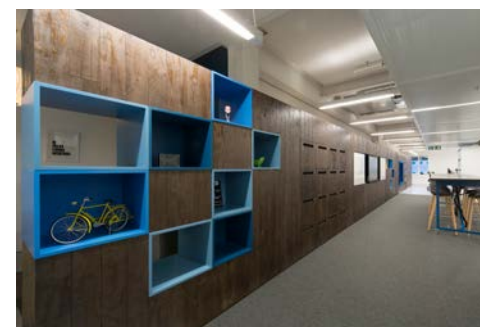


## Bespoke Joinery Solutions





# **CONTENTS**

**1. Who We Are**

**2. What We Do**

**3. Project Portfolio**

**4. Doorsets and Solutions**







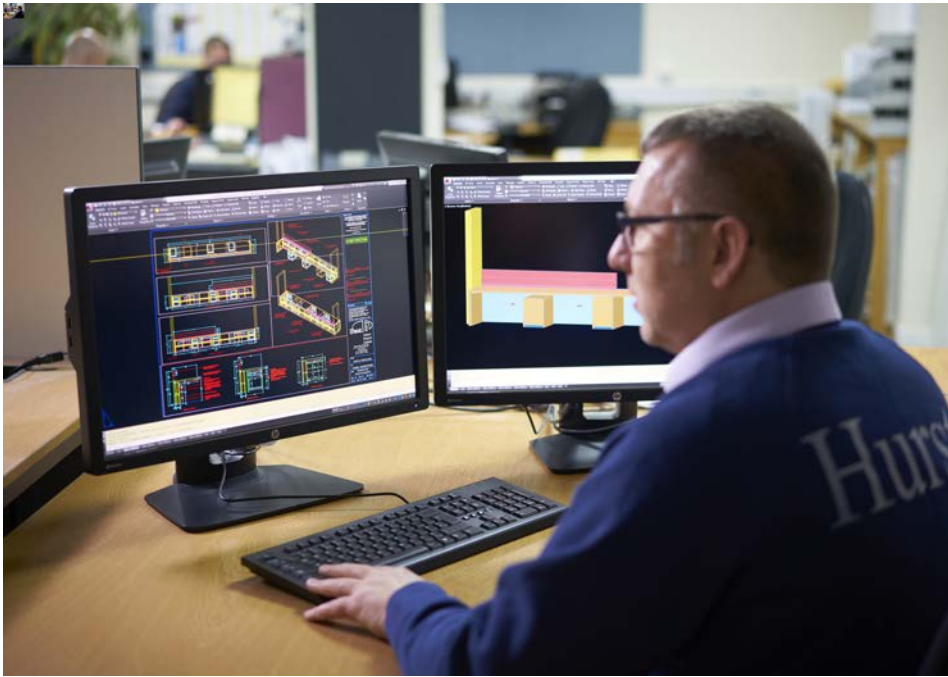
## 1. Who We Are

Founded back in 1969 Hurst Joinery Projects manufactures and installs bespoke and batch joinery to direct clients and main contractors across the UK. With extensive experience in the commercial, retail and leisure business sectors. Hurst has specific experience in the London area delivering high quality solutions for a number of major London Contractors.

Hurst works closely with clients and consultants to provide solutions engineered to your specific needs, with the capability to work within BIM guidelines. We are very well respected for producing quality reception desks, banquette seating, retail display units, credenza's and bars.

We are committed to the development of all our staff and operate an apprentice scheme employing apprentices on a full time basis throughout their 3 years at college through to achieving NVQ Level 3.







## 2. What We Do

With over 70,000 sq ft of joinery manufacturing facilities including our own in-house Machine Shop, Polishing Shop and veneer cutting, stitching and pressing machinery, Hurst has the capability to handle any size of project.

Our in-house Setting Out team can bring your ideas and concepts to life with working drawings ready for manufacture. We also have the capability to work with files in Auto Cad® and Revit®.

Hurst Joinery Projects hold FSC® Chain of Custody certified by BM Trada for the manufacture and supply of products sourced from FSC® certified material. We are also an Approved and Certified Fabricator for solid surface materials including: Corian, Wilsonart, Staron, HIMACS, Formica and Hanex.

Hurst is committed to being a sustainable joinery company and has invested in a Talbott Biomass Boiler. We can now recycle or reuse our timber by-products to produce heat for our factory environment, therefore reducing the amount of waste sent to landfill.





TEN DEGREES



### 3. Project Portfolio

#### Residential Amenities Fit Out

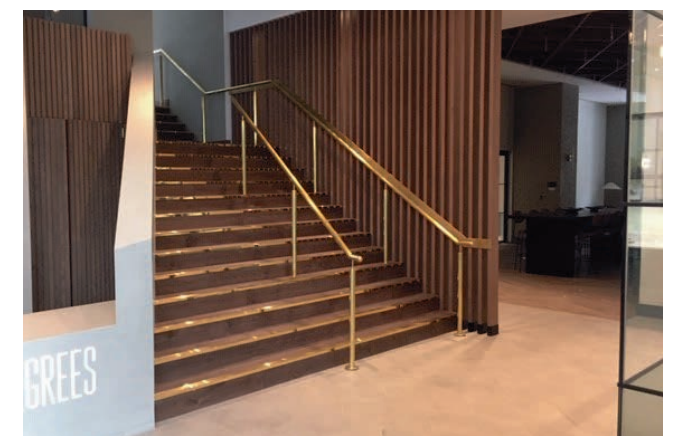
**Location:** South London

**Main Contractor:** Confidential

**Project Challenges:**

An unforeseen nationwide lockdown presented real challenges for delivering the project on time.

The joinery factory was reopened with a skeleton team, specifically to guarantee that the deadline would be met.





# Grosvenor Place

**Location:** London

**Main Contractor:** Confidential

## Project Challenges:

The complex geometric forms required precision during all stages of manufacturing and installation to ensure that all components could be fitted correctly first time.













# Exchequer Court

**Location:** Central London

**Main Contractor:** Artemis Interiors

**Architect:** Orbit Architects

## Project Challenges:

Vinyl wrapping of doors and manufacture and delivery of 3.6m long Corian top for refreshments counter to the first floor.



# Petersham Nurseries

**Location:** Covent Garden

**Main Contractor:**

Atlas Refurbishment Northern Ltd.

**Photography:** Paul Craig

## Project Challenges:

Definition of a very organic brief working closely with the client through to delivery of the final bespoke joinery elements. Several items were required to be clad in specialist decorations from black steel to copper leaves.













# Alphabeta Building

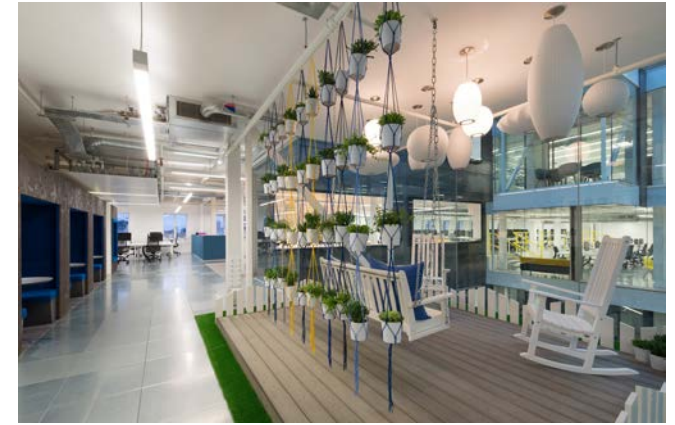
**Location:** Central London

**Main Contractor:** Collins Construction

**Architect:** BDG

## Project Challenges:

Delivery to challenging project deadlines, setting out and manufacture of over 300 individually numbered lockers in two sizes and positioning and installation of booth seating.



# Sweet Squared

**Location:** Leeds

**Designer:** Hurst In House Design

## Project Challenges:

To meet the clients brief to design and deliver a clean overall finish whilst subtly embracing the 'square' elements of their branding. The design for the reception area and desk incorporate the colour schemes from the main office refurbishment and Sweet Squared branding. A black and white finish was agreed for the retail display to highlight the vibrant nail product colours.









# Landmark Space Limited

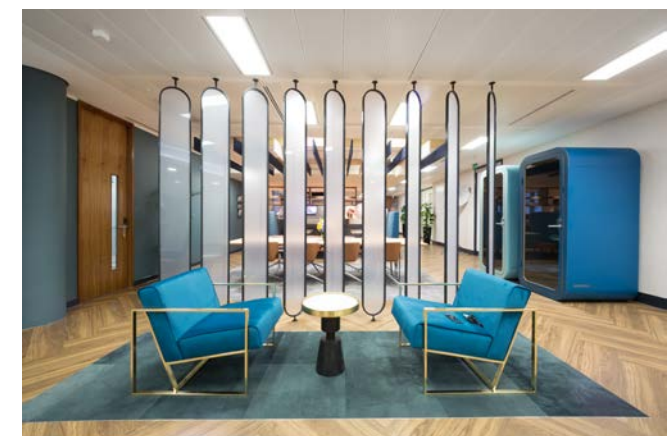
**Location:** Multiple Central London Locations

**Main Contractor:** Parkeray Limited

**Architect:** Garnett Netherwood Architects

## Project Challenges:

Accessibility was a key factor in the delivery of these projects with offices on various floor levels. Noise levels were monitored throughout the projects as we were operating in live working environments.





## Intu - Victoria Centre

**Location:** Nottingham

**Designer:** Hurst In House Design

### Project Challenges:

The client requested that the oak seating was designed to not be too comfortable so the spacing's and dimensions of the timber slats were tried in various scenarios to give the required effect. The seating also needed to be removable and Hurst provided a method of lifting the units without the maintenance team having to lift them manually.





# Leeds Arena

**Location:** Leeds

**Main Contractor:** AECOM

**Designer:** Fuse Design Studios

## Project Challenges:

Delivery of all elements to very tight programme deadlines. Manufacture of feature walnut mirrored wall with halo lighting, walnut slatted wall divider and timber baffled ceilings.













# Reebok Sports Club

**Location:** Canary Wharf, London

**Main Contractor:** Vincent Stokes Ltd.

**Architect:** B3 Designers

## Project Challenges:

Manufacture and supply of zinc top bar,  
heritage banquet seating and wall panelling  
within London's largest luxury health club.





## Science & Media Museum

**Location:** Bradford

**Designer:** Ab Rodgers Design

### Project Challenges:

A fast track complex project including bespoke joinery and gallery enclosures to a very high specification providing robust finishes. Five draughtsmen were required to meet the programme timings for opening of the new gallery. Liason was required with individual exhibitors during both the design and installation.









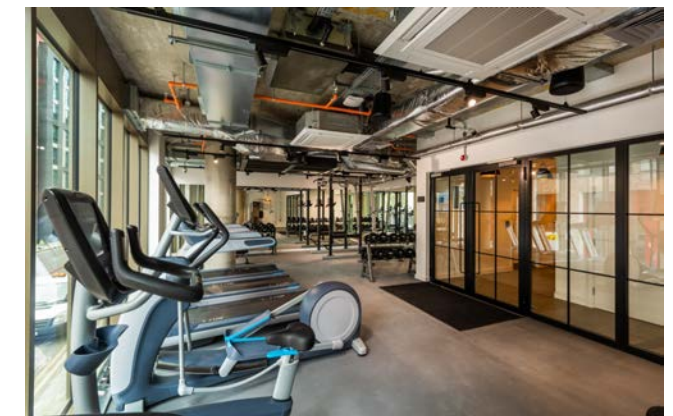
## Student Accommodation

**Location:** Holloway Road, London

**Main Contractor:** Tide Construction Limited

### Project Challenges:

The design and manufacture of a bespoke concierge desk with painted finish and oak counter. Project deadlines were challenging for delivery of all required items.



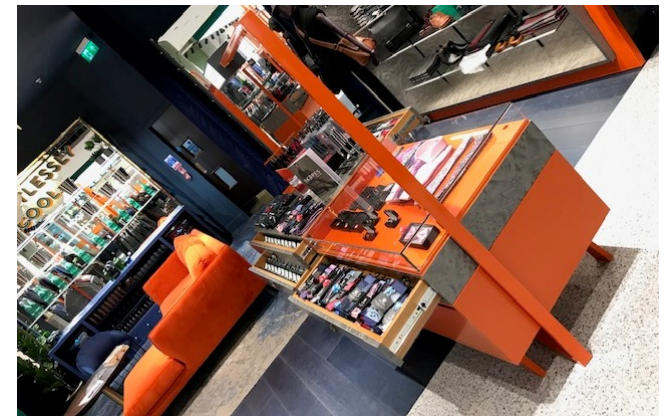


# Skopes

**Location:** Westfield, White City, London

## **Project Challenges:**

Manufacture and delivery of all point-of-sale and display items in just 8 weeks from order to completion. All items were bespoke designed to meet the client's brief with a wide variety of finishes, design details, integrated lighting and special features.









## 4. High Performance Doorsets and Solutions

Aynsley Doors is Hurst's specialist door division. We manufacture and supply doors, door sets and performance solutions with a particular focus on the hospitality, leisure, education, workspace and health markets.

All doors and door sets are manufactured to the highest standards of craftsmanship, materials and finish. We hold **Chain of Custody Certification** and have been independently audited through the **BM Trada Q-Mark Fire Door Scheme** and awarded certification in both **Fire Door Manufacture** and **Fire Door Installation**. With accreditation in both Fire Door Schemes, we are in the unique position of being able to offer a seamless accredited service from manufacture right through to installation, without the need for external contractors to oversee the process.

Performance doorsets are available in a wide range of finishes including veneers (stitched in our own factory) and a mix of species, laminates and factory applied paint finishes.

We can supply doors and door sets delivering performance criteria for:

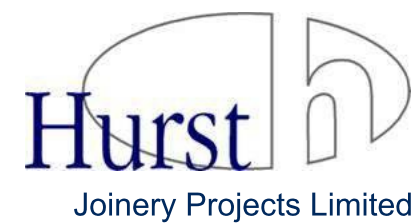
- Fire and smoke leakage control (from FD30's up to FD120's)
- Acoustics up to 42 Rw dB
- Integrated security systems
- Historic replication

Our professional services include:

- Design development and technical advice
- Compliance and build-ability guidance
- Detailed project estimating and scheduling
- Site liaison and attendance







Aynsley House, Common Road, Low Moor,  
Bradford, West Yorkshire BD12 0UF

T. 01274 670 077 | E. [hjp@thehurstgroup.co.uk](mailto:hjp@thehurstgroup.co.uk)



[linkedin.com/hurstjoineryprojects](https://www.linkedin.com/company/hurstjoineryprojects)



[twitter.com/thehurstgroup1](https://twitter.com/thehurstgroup1)

