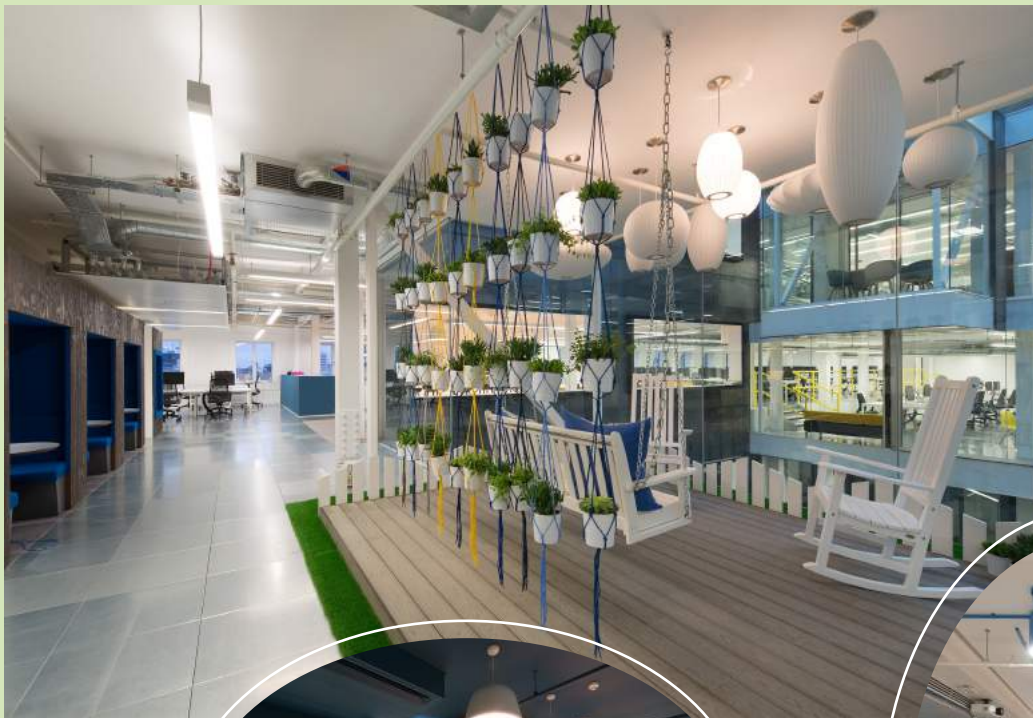


DELIVERING INTERIOR SOLUTIONS





Client: Maxus UK

Location: Alphabeta Building - London

Main Contractor: Collins Construction Plc

Architect: BDG

Hurst delivered a bespoke joinery package within the landmark Alphabeta Building at Finsbury Square, the building is London's first 'cycle-in office'. The building also offers a variety of spaces from the atrium café overlooking the ride-in cycle ramp to the eighth floor terrace which has panoramic views.

Scope of Works:

- over 300 individually numbered lockers in two sizes
- a number of large communication walls incorporating AV screens, white boards and display niches
- atrium garden room featuring a swing seat, wooden decking and picket fence
- reception desk with concrete top
- meeting room credenza's
- booth seating and tables
- bespoke kitchen area
- storage and coat cupboards
- wall cladding
- tea and print copy points

thehurstgroup.co.uk







Client: Lancashire Insurance Group

Location: Walkie Talkie Building,
Central London

Main Contractor: Parkeray

Scope of Works: Manufacture and
installation of bespoke joinery package
including:

- Stunning bowl shaped reception desk in American oak veneer.
- Reception media walls.
- Oak veneered boardroom credenza unit with satin stainless steel skirting.
- Quiet study booths with oak desk, sliding doors and oak panelling.
- Visitor and staff lounge bars with oak tops, distinctive black and white tiling, back painted glass base unit housing glass fronted drinks fridges.
- Trader booths with banquette seating, cantilevered oak tables and flat screen monitors.
- Trader copy counter with laminate worktop, cupboard and doors with hardwood lipping and internal shelving.
- Staff welfare area including counter with laminate worktop, back painted splash back, hard wood lipping and LED strip lighting.
- Full height coats cupboard in vinyl white wrap finish.



thehurstgroup.co.uk





Contractor: PPC LLP

Location: Fulham Road, London SW3

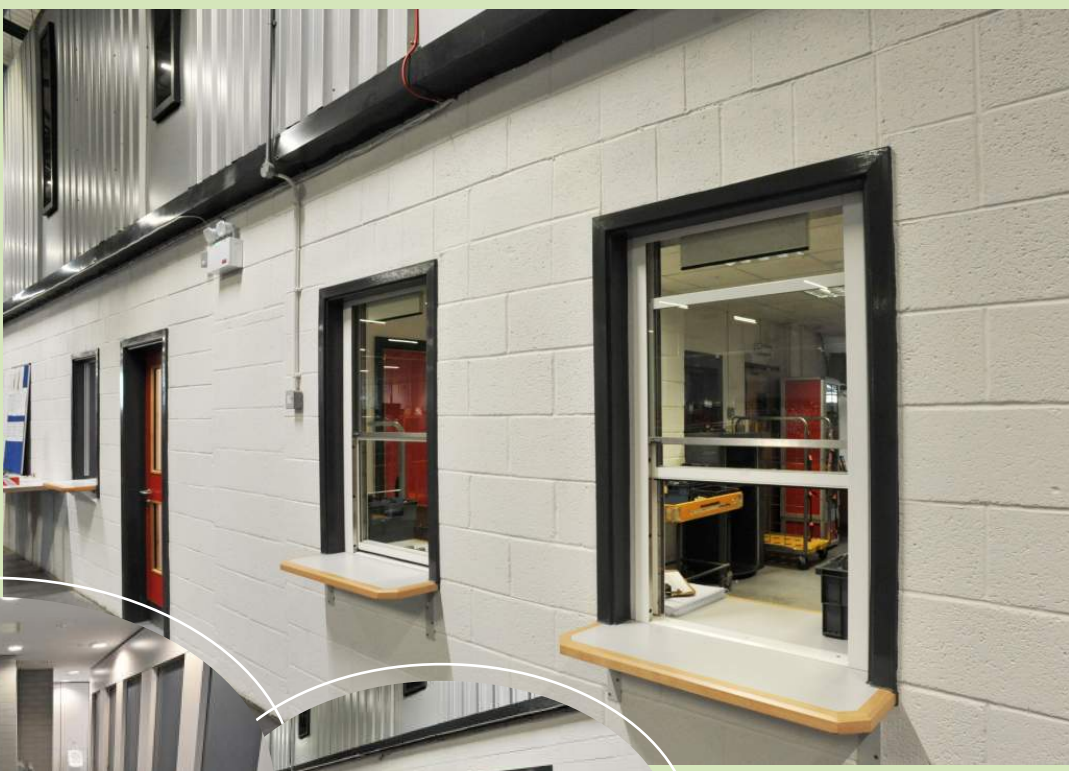
The **Michelin House** building commissioned by the Michelin Tyre Company Ltd as their British headquarters in 1909, is a stunning Art Nouveau London landmark. Hurst are proud to have worked at this site for a private client on the second floor of the building.

Scope of Works: Manufacture and installation of bespoke joinery package including:

- Curved reception desk in American black walnut and leather cladding.
- Walnut ceiling raft.
- Walnut panelled feature wall with company plaque and recessed shelf with lighting.
- Slate feature wall to meeting room with walnut surround and back lighting.
- Glass display cases and embedded lighting features.
- Coat cupboard.
- Timber painted panelling to lift fronts.
- Walnut panelling and AV unit to kitchenette area
- Two media walls with black painted glass and storage in black walnut.
- Free standing room divider in walnut.

thehurstgroup.co.uk







Client: Royal Mail

Location: Cambridge

Main Contractor: MACE

Scope of Works:

Refurbishment of ground and first floor offices, wash-rooms, welfare areas and sorting hall including:

- Soft floor coverings both vinyl and carpet tiles.
- Ceramic wall and floor tiling.
- Gradus wall coverings.
- Partitions and dry lining.
- Suspended ceilings.
- WC cubicles and vanity units in wash-rooms.
- New reception counter.
- Bespoke joinery for welfare areas including staff booths, seating and storage cupboards.
- New kitchens and fit out of self mess areas x 3.
- External and internal painting and decorating.



Location: City of London

Main Contractor: Cameron Black

Hurst Joinery Projects have successfully delivered a bespoke joinery package within the **Bury House** office building in the heart of London's financial district. Bury House is located close to the iconic 'Gherkin' building in the city.

Scope of works:

Hurst Joinery Projects supplied and installed -

- reception desk manufactured in glacier white Corian
- rear laminated storage cupboards
- IPS walnut panels and mirrors to wash-rooms



Client: GHD

Location: Leeds City Centre

Scope of Works:

Manufacture and installation of bespoke joinery package for head office including:

- Creation of striking curved timber reception area with catwalk.
- Multi-functional training academy.
- High specification boardroom.
- Unique break out areas.





Client: Private

Location: Central London

Main Contractor: Structure Tone

Building Consultant: CBRE

**HOWICK
PLACE**
LONDON SW1



Howick Place is a dramatic new landmark at the heart of Victoria's expanding cultural quarter. Hurst Joinery delivered a bespoke joinery package for a leading public relations client which included:

Scope of Works:

- **Reception Area:** including padded seating and chairs/tables with gloss white finish, feature metal frame, fabric panels, oak planters and large polished oak table.

- **Break Out Area:** bar and servery unit including ceramic tiling. Breakout benches with floor to ceiling metal frame and high stools.

- **Hub Area:** oak slatted walls, oak table and feature high gloss wall with screen.

thehurstgroup.co.uk



Client: Infusion - American Technology Solutions Company

Location: Level 7 - Exchange Tower, Docklands, London

Architect: Pringle Brandon Perkins + Will

Scope of Works:

Supply and installation of bespoke joinery package including -

- Corian glacier white reception desk with LED lighting
- Toughened glass back rear wall
- Innovation hub and feature wall
- Kitchen – including sink/taps and glass splash-backs
- Storage with high gloss doors
- Breakout area in Walnut





Client: The Honourable Society of
Lincoln's Inn

Location: No 2, New Square, London WC2



Scope of Works:

Supply and installation of bespoke joinery package including -

- Design and manufacture of 2 types of bookcases.
- 32 bookcases manufactured in Maple veneer with walnut nosing and lippings.
- 92 radiator casings with nickel plated grills.
- Panelled and primed doors with satin chrome iron mongery (139 internal and 12 external).

The total package covering 25 barrister's chambers was successfully delivered over a two month period.



thehurstgroup.co.uk



Hurst Joinery Projects Limited have recently taken a step into the Craft and Design world. Contemporary Applied Arts is a registered charity which was set up to promote and champion British Craft. It offers dedicated exhibition and retail space with a changing programme of shows and events and is relocating to these new premises in June 2013.

Main Contractor: Virtus Contracts Ltd

Location: 89 Southwark Street, London




Scope of Works:

Supply and installation of bespoke joinery package including:

- 15 display cases in birch ply (6 illuminated)
- an illuminated jewellery counter
- front of house serving counter
- bespoke staircase and hand rail in oak
- back office kitchen



Aynsley House, Common Road, Low Moor, Bradford.
 West Yorkshire BD12 0UF
 Tel. 01274 670 077
 Fax. 01274 711 205
 email: marketing@thehurstgroup.co.uk
 Website: thehurstgroup.co.uk

 [linkedin.com/hurststores&interiors](https://www.linkedin.com/company/hurststores&interiors)
[linkedin.com/hurstjoineryprojects](https://www.linkedin.com/company/hurstjoineryprojects)
 twitter.com/thehurstgroup1
 [@hurstgroup](https://www.facebook.com/thehurstgroup)