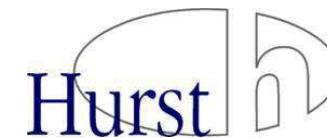




DELIVERING INTERIOR SOLUTIONS





Client: ACS Stainless Steel Limited

Location: Leeds

Hurst completed the fit out of commercial offices for company 'ACS Stainless Steel Limited' at their new manufacturing facility site just outside Leeds. This extensive fit out project (over 2 floors) extends to an area of 1500 sq mtrs.

Scope of Works:

- Installation of four tea points and kitchens.
- Installation of all new partitions and ceilings.
- New flooring throughout the offices with a total of 26 different floor finishes.
- Creation of individual glazed offices.
- Fit out of corporate boardroom with movable dividing wall.
- Fit out of all corporate washrooms including tiling requirements.
- All decorations.







Client: Sweet Squared

Designer: In House Design

Location: Leeds

Scope of Works:

Hurst completed the fit out of new offices for leading UK nail & beauty product distributor Sweet Squared in Leeds. Sweet Squared distribute the most talked about brands within the nail & beauty industry including for example CND, CND Shellac, Vinylux etc.

Hurst undertook the project design in-house to meet the client's brief to design and deliver a clean overall finish whilst embracing the 'square elements' of their branding. The design for the reception area incorporates the colour scheme from the main office refurbishment and Sweet Squared branding.

The project included:

- Design, manufacture and installation of an illuminated Corian reception desk with feature Sweet Squared sign.
- Creation of a new retail shop to showcase new products.
- Fit out of new training classrooms.
- Banquette seating.
- Supply of all new office furniture.

thehurstgroup.co.uk







Client: Maxus UK

Location: Alphabeta Building - London

Architect: BDG

Hurst delivered a bespoke joinery package within the landmark Alphabeta Building at Finsbury Square, the building is London's first 'cycle-in office'. The building also offers a variety of spaces from the atrium café overlooking the ride-in cycle ramp to the eighth floor terrace which has panoramic views.

Scope of Works:

- over 300 individually numbered lockers in two sizes
- a number of large communication walls incorporating AV screens, white boards and display niches
- atrium garden room featuring a swing seat, wooden decking and picket fence
- reception desk with concrete top
- meeting room credenza's
- booth seating and tables
- bespoke kitchen area
- storage and coat cupboards
- wall cladding
- tea and print copy points







Client: Financial Services

Location: Exchequer Court,
Central London

Architect: Orbit Architects

Hurst Joinery manufactured and installed a range of bespoke joinery items for the fit out of prestigious commercial offices. The offices in central London extend to 35,000 sq ft.

Scope of Works:

- New curved concierge desk in 'Rain Cloud' Corian.
- Large (3.6m long) office refreshments counter with 'Rain Cloud' Corian work surface.
- Audio Visual wall with fabric covered panels.
- Audio Visual wall covered in blackened glass.
- Feature columns wrapped in Hausys Vinyl.
- A range of tea points with spray painted doors.
- Howden's 'Greenwich Grey' tea points.
- New copy points with spray painted doors.







Location: Fulham Road, London SW3

The **Michelin House** building commissioned by the Michelin Tyre Company Ltd as their British headquarters in 1909, is a stunning Art Nouveau London landmark. Hurst are proud to have worked at this site for a private client on the second floor of the building.

Scope of Works: Manufacture and installation of bespoke joinery package including:

- Curved reception desk in American black walnut and leather cladding.
- Walnut ceiling raft.
- Walnut panelled feature wall with company plaque and recessed shelf with lighting.
- Slate feature wall to meeting room with walnut surround and back lighting.
- Glass display cases and embedded lighting features.
- Coat cupboard.
- Timber painted panelling to lift fronts.
- Walnut panelling and AV unit to kitchenette area
- Two media walls with black painted glass and storage in black walnut.
- Free standing room divider in walnut.

thehurstgroup.co.uk







Client: Royal Mail

Location: Cambridge

Scope of Works:

Refurbishment of ground and first floor offices, wash-rooms, welfare areas and sorting hall including:

- Soft floor coverings both vinyl and carpet tiles.
- Ceramic wall and floor tiling.
- Gradus wall coverings.
- Partitions and dry lining.
- Suspended ceilings.
- WC cubicles and vanity units in wash-rooms.
- New reception counter.
- Bespoke joinery for welfare areas including staff booths, seating and storage cupboards.
- New kitchens and fit out of self mess areas x 3.
- External and internal painting and decorating.







Client: Lancashire Insurance Group

Location: Walkie Talkie Building,
Central London

Scope of Works: Manufacture and installation of bespoke joinery package including:

- Stunning bowl shaped reception desk in American oak veneer.
- Reception media walls.
- Oak veneered boardroom credenza unit with satin stainless steel skirting.
- Quiet study booths with oak desk, sliding doors and oak panelling.
- Visitor and staff lounge bars with oak tops, distinctive black and white tiling, back painted glass base unit housing glass fronted drinks fridges.
- Trader booths with banquette seating, cantilevered oak tables and flat screen monitors.
- Trader copy counter with laminate worktop, cupboard and doors with hardwood lipping and internal shelving.
- Staff welfare area including counter with laminate worktop, back painted splash back, hard wood lipping and LED strip lighting.
- Full height coats cupboard in vinyl white wrap finish.





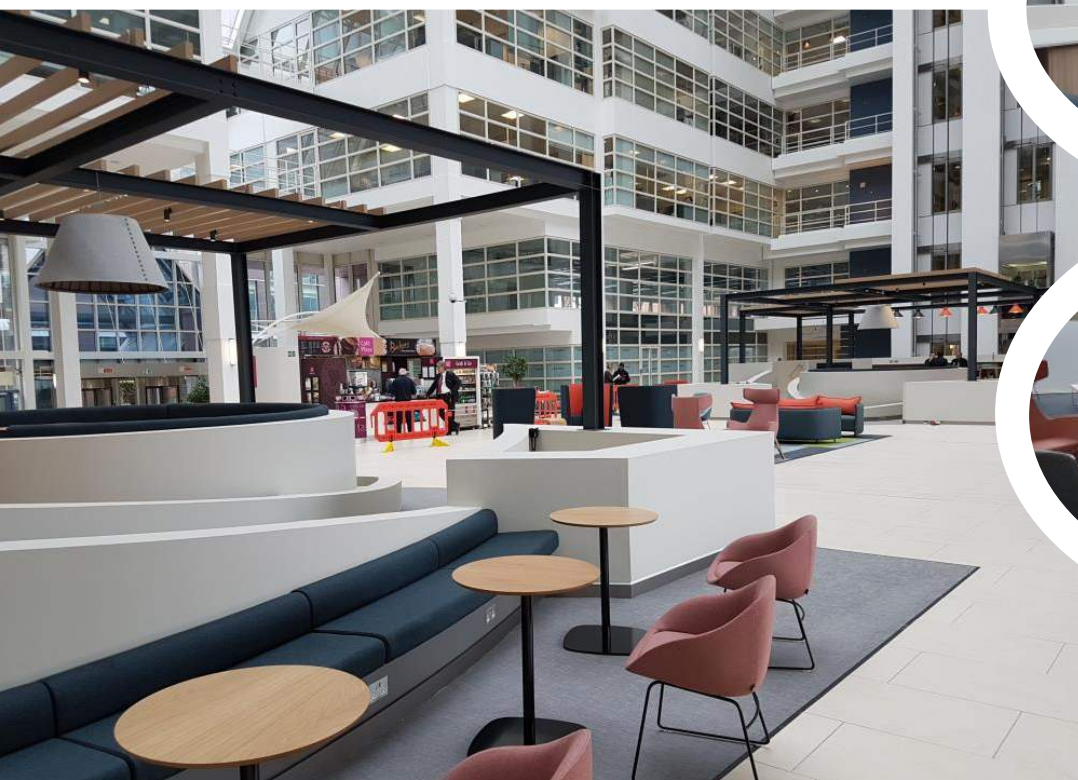
Location: Reading

Hurst Joinery delivered a bespoke joinery package within the iconic Apex Plaza building in Reading as part of the buildings refurbishment. The Apex Plaza building is the eye-catching focal point of Reading's business district with a vast atrium and Reading's mainline station is also accessible via a private bridge.

Scope of works:

Hurst Joinery Projects supplied and installed:

- Curved banquette seating.
- Booth seating and tables.
- Feature oak beams on steel framed pagodas.
- Free standing library units.
- Timber frames for planters and plinths.





Location: City of London

Hurst Joinery Projects have successfully delivered a bespoke joinery package within the **Bury House** office building in the heart of London's financial district. Bury House is located close to the iconic 'Gherkin' building in the city.

Scope of works:

Hurst Joinery Projects supplied and installed -

- reception desk manufactured in glacier white Corian
- rear laminated storage cupboards
- IPS walnut panels and mirrors to wash-rooms





Client: Freeths - National Law Firm

Location: Nottingham

Scope of Works: Manufacture and installation of bespoke joinery package including:

- Manufacture and installation of angular design illuminated white Corian reception desk.
- Corporate sign made of MDF with liquid metal coating applied to give a striking metallic look.
- Vanity units incorporating Corian sinks and mirror units with integrated hand dryers.
- New teapoint.
- Two matching TV and storage units.





Location: Central London

Building Consultant: CBRE

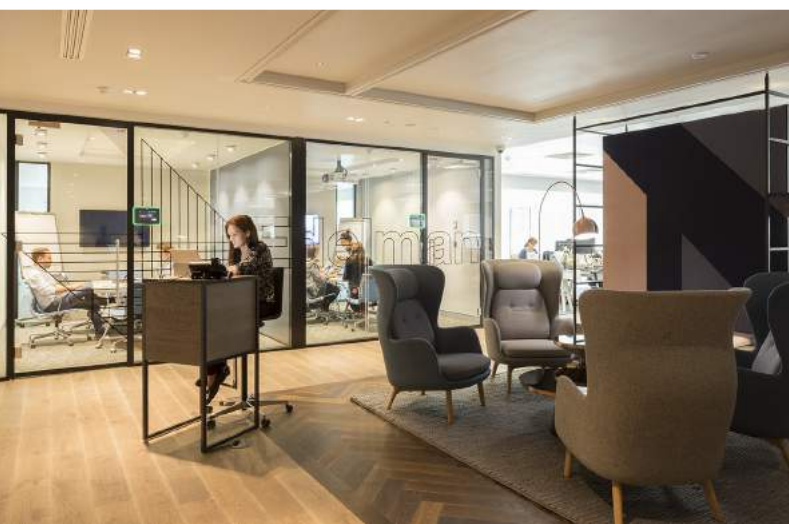
Howick Place is a dramatic new landmark at the heart of Victoria's expanding cultural quarter. Hurst Joinery delivered a bespoke joinery package for a leading public relations client which included:

Scope of Works:

- **Reception Area:** including padded seating and chairs/tables with gloss white finish, feature metal frame, fabric panels, oak planters and large polished oak table.

- **Break Out Area:** bar and servery unit including ceramic tiling. Breakout benches with floor to ceiling metal frame and high stools.

- **Hub Area:** oak slatted walls, oak table and feature high gloss wall with screen.





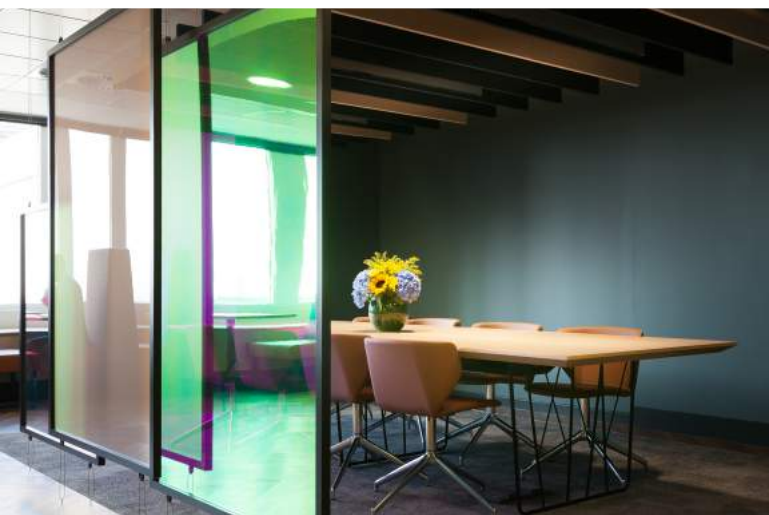
Client: Landmark Space Limited

Location: Multiple Sites, Central London

Landmark Space Ltd provide stunning private & shared offices in 44 UK locations. Hurst have manufactured and installed joinery elements at 7 sites across central London including: Bevis Marks, Beaufort House, King William Street, Bishopsgate, Canon Place, Royal Exchange and Grace Church Street.

Scope of Works:

- Reception desks and storage.
- Large break out counters and kitchenette.
- Hanging glass/print panels.
- Wall panelling to meeting rooms.
- Hanging dividing paddles.
- Faux leather and fabric banquette seating.
- Breakfast bars.
- Suspended storage shelves.
- Inset ceiling panels.





Client: Infusion - American Technology Solutions Company

Location: Level 7 - Exchange Tower, Docklands, London

Architect: Pringle Brandon Perkins + Will

Scope of Works:

Supply and installation of bespoke joinery package including -

- Corian glacier white reception desk with LED lighting
- Toughened glass back rear wall
- Innovation hub and feature wall
- Kitchen – including sink/taps and glass splash-backs
- Storage with high gloss doors
- Breakout area in Walnut





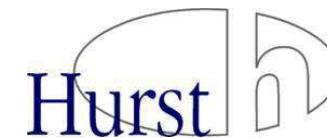
Client: Farfetch -
International Fashion House
Location: Bower Building,
Old Street, London
Architect: Studio Fibre

Hurst Joinery Projects delivered a bespoke joinery package for Farfetch, a global community of over 300 visionary fashion boutiques, working in harmony with the original look and feel of the refurbished Bower Building.

Scope of Works:

- Bespoke bamboo kitchenette and toasting station with stainless steel tops, rear storage units, integrated appliances and walnut wall cladding.
- Marble reception desk with carved in corporate logo.
- Bespoke bamboo staircase over three floors including floating section.
- Bespoke staircase with glass balustrade, beech handrail, profiled side and rear wall with shelving and seating.





Client: Private

Location: Central London

Hurst Joinery manufactured and delivered the joinery requirements for this stunning modern and fresh workplace bistro. Hurst were working with a leading London Fit Out Contractor for a commercial organization in central London.

Scope of Works:

- Supply and installation of bespoke bistro fitments.
- Mixture of siltstone and wood worktops.
- Oak chiller shrouds.
- Chef's servery and prep areas featuring contrasting stainless steel and orange finishes.





Client: Private

Location: Central Bristol

Hurst Joinery manufactured and installed a number of bespoke joinery items as part of the refurbishment of One Cathedral Square in Bristol.

One Cathedral Square is right in the heart of the city on the doorstep of the historic Clifton and is within walking proximity of Temple Meads train station along the striking and historic Brunel Mile.

Scope of Works:

- Install of leather banquette seating with cantilevered marble table tops and oak slatted panelling.
- Manufacture and supply of new marble clad reception desk.
- Walnut veneered wall panels set into an anodise aluminium extrusion.
- New white gloss teapoint.
- Black laminate lift reveal panels.



