

- Bespoke communication wall

## Bespoke Joinery



**Client:** Maxus UK

**Main Contractor:** Collins Construction Plc

**Architect:** BDG

**Location:** Alphabeta Building - London

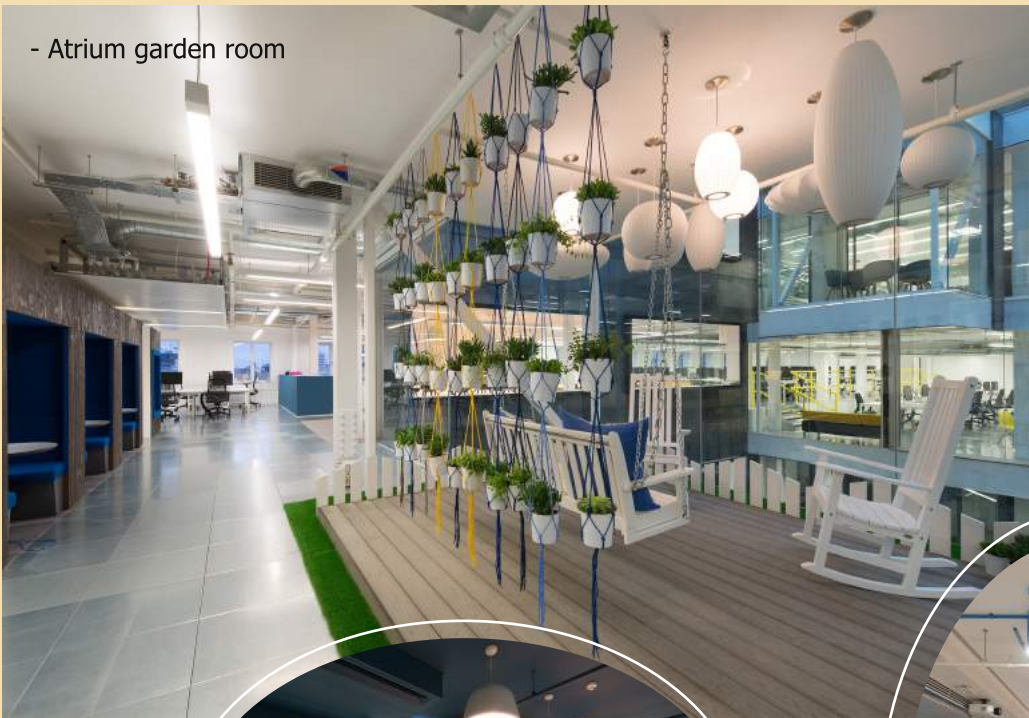
Hurst delivered a bespoke joinery package within the landmark Alphabeta Building at Finsbury Square, the building is London's first 'cycle-in office'. The building also offers a variety of spaces from the atrium cafe overlooking the ride-in cycle ramp to the eighth floor terrace which has panoramic views.

### Scope of Works:

- over 300 individually numbered lockers in two sizes
- a number of large communication walls incorporating AV screens, white boards and display niches
- atrium garden room featuring a swing seat, wooden decking and picket fence
- reception desk with concrete top
- meeting room credenza's
- booth seating and tables
- bespoke kitchen area
- storage and coat cupboards
- wall cladding
- tea and print copy points

[thehurstgroup.co.uk](http://thehurstgroup.co.uk)

- Atrium garden room



- Individually numbered lockers



- Bespoke communication wall



- Preparation kitchen

